



## AirMagnet Planner



AirMagnet Planner makes it easy for network professionals to accurately plan and deploy any 802.11a/b/g/n-based wireless networks in any indoor environment. The AirMagnet Planner accounts for building materials, obstructions, access point configurations, antenna patterns, and a host of other variables to provide a reliable predictive map of Wi-Fi signal and performance. It ensures full coverage for end-users while minimizing signal bleed into unsecured areas. AirMagnet Planner can be purchased as a separate product or as a fully integrated feature of AirMagnet Survey Express or Survey PRO.

### Professional WLAN Design & Modeling

Complete 802.11a/b/g/n Support

Make migration decisions for existing legacy networks

Properly size new wireless deployments for any environment or location

Predict WLAN network performance

Build detailed indoor RF models based on building materials and environment

Automate WLAN installation plans including all AP deployment and configuration options

Model any antenna and preview the impact to your WLAN

Ensure complete RF signal coverage while minimizing signal leak into unsecured areas

Create "Bill-of-Materials" report

Validate results against "active post-deployment" site surveys



## Unmatched Analysis

### Great Networks start with great design

An accurate network plan can be the most critical step of a successful wireless deployment. An unscientific plan can lead to vastly over-spending on network infrastructure or alternatively to underserved and unhappy end-users. AirMagnet Planner removes the need for guess-work and lets installers determine the correct quantity, placement and configuration of APs required to deliver full coverage for end-users while minimizing signal bleed into unsecured areas. Users can preview the network by channel or SSID ensuring the network conforms to any specification.

### Wi-Fi Tailored to your environment

AirMagnet Planner makes it easy to build a detailed model of any wireless environment, even before the network is deployed. Simply load in a map of the location, and use the built-in library of walls, doors and windows to precisely match the building's characteristics. The environment can be further customized to account for cubicles, offices, elevators and a variety of warehouse obstructions. All environmental settings are fully customizable and custom materials can be created from scratch to meet your specifications.

### Build your Network

AirMagnet Planner provides full control of the proposed wireless infrastructure. Users can add APs to any location and experiment to find the ideal AP placement for the environment. Planner also provides full control over all AP settings with independent settings for 11a and 11b/g radios. Users can set the AP channel, IP address, transmit power, antenna type, orientation, height and 802.11n specifications. When the planning session is complete, users can generate a professional report with all the information needed to properly install the network, complete with a list of required APs, their ideal placement and configuration settings. Users can also use Planner to predict network data rate information.

### 802.11n Modeling

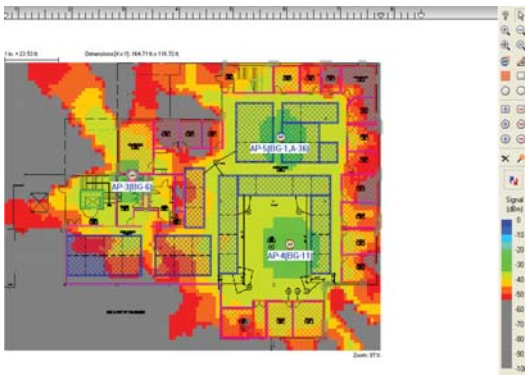
AirMagnet Planner is the WLAN industry's only planning solution that covers all aspects of a successful 802.11n deployment: Migration, Performance Prediction and Validation. Users can design new 802.11n Greenfield networks, as well as, plan their migration strategies for existing legacy networks, including one-to-one replacements or the phased introduction of 802.11n devices into their legacy network. Users plan their 802.11n deployments for maximized performance without any physical AP roll-out and are powered with unique coverage maps for WLAN throughput and other 802.11n coverage maps, such as Operating Mode, MCS Transmit Rate and Channel Width, to predict the WLAN performance at every location on the floor. Finally Planner is part of a single, seamless application, AirMagnet Survey PRO, for validating "modeled" 802.11n results against "real-world active" post-deployment surveys.

### Automated WLAN Modeling

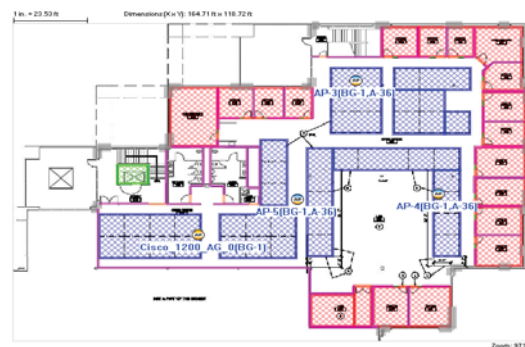
AirMagnet Planner also includes the "advisor feature" to automatically place APs on site floor plans. Users can specify the minimum signal coverage expected, the transmit power, media type of the AP, etc. and mark Wi-Fi coverage areas and areas where APs cannot be placed.

### Custom Antenna Design

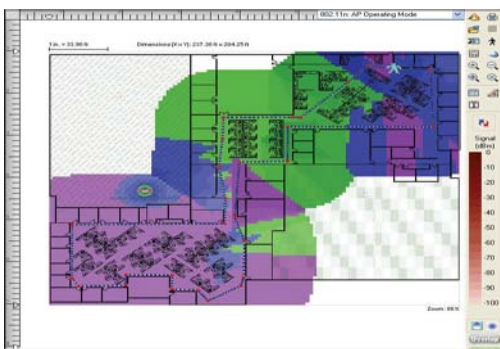
AirMagnet Planner includes over 250 of the most popular antenna patterns on the market for customizing your APs, including ones from Cisco, Aruba, Meru Networks, HP, Symbol, 3Com, Bluesocket, Motorola, D-Link Systems, etc. However, the solution also includes a built-in tool to create customized antenna patterns, allowing users to replicate the characteristics of literally any antenna on the market.



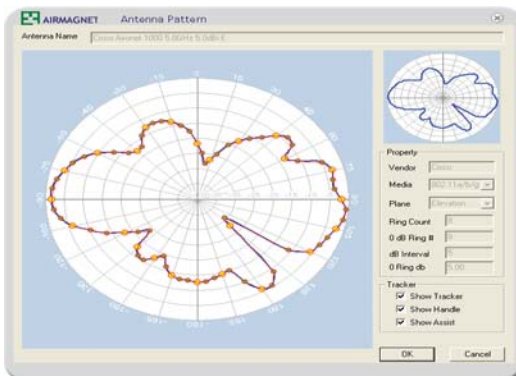
AirMagnet Planner for automated WLAN modeling



Customizable building characteristics

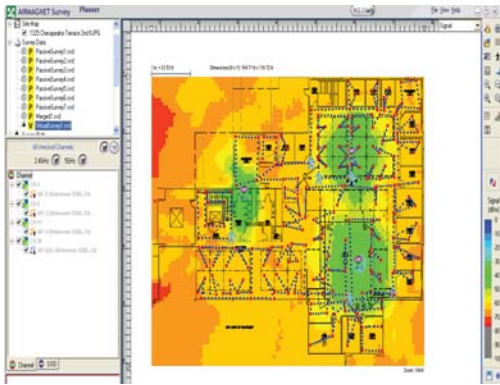


802.11n coverage maps



Antenna Manager to create customized antenna patterns

# Integration with AirMagnet Survey



Measure real-world performance statistics

## Integration with AirMagnet Survey

AirMagnet Planner is built into AirMagnet Survey PRO, providing a single, seamless application with the industry's most complete approach to wireless LAN design, deployment and ongoing optimization for 802.11a/b/g/n networks. With this integrated solution, users can use Planner to accurately design their WLANs and plan for speed; then validate the results with real-world data in Survey PRO using active end-user performance metrics, such as actual connection speed and performance metrics, allowing users to further perfect their planning models over time. No other solution combines state-of-the-art predictive modeling with real-world performance data. Users also gain additional planning capabilities with the ability to test network plans against the AirWISE engine for design requirements; and the Throughput coverage map to visualize predicted WLAN performance at every location on the floor map.

AirMagnet Planner also integrates with AirMagnet Survey Express.

### Product

### Part Number

AirMagnet Planner (Standalone)	AM/A4012
AirMagnet Survey PRO (incl. Planner)	AM/A4018
AirMagnet Planner (upgrade from AirMagnet Survey Express or upgrade for existing A4015 customers)	AM/A4013-UGD
AirMagnet Survey Express (optional)	AM/B4010

### Minimum System Requirements

Microsoft® Windows Vista™ Business/Ultimate (SP1) or XP™ Professional (SP3) / Tablet PC Edition 2005 (SP3) or MAC OS X Leopard™ (Apple® MacBook® Pro running Windows XP™ PRO/SP3 using Boot Camp® ). **Note:** Use Windows XP™ SP2 if using AirMagnet Spectrum Analyzer as a standalone application on the same machine.  
 Intel® Pentium® M 1.6 GHz (Intel® Core™ 2 Duo 2.00 GHz or higher recommended)  
 1 GB memory (2 GB recommended) for Windows XP™. 2 GB or higher required for Windows Vista™  
 800 MB of free disk space  
 A site map in a format supported by AirMagnet Planner(supported formats are: .bmp, .dib, .dwg, .dxf, .emf, .gif, vsd, .jpg, or .wmf.)  
 AirMagnet Survey Express (required for AM/A4013-UGD only; Refer to datasheet for AirMagnet Survey for its minimum specifications)

**Patents:** U.S. Patent No. 7009957, 7236460, 7292562, 7289465, ZL030807586, 7385948, 7613139B1 and 7130289. Additional patents pending.

\*\*This product features Autodesk RealDWG technology: <http://www.autodesk.com/autodeskrealdwg>

## For More Information

SALES: [http://www.airmagnet.com/company/contact\\_airmagnet.php?type=sales](http://www.airmagnet.com/company/contact_airmagnet.php?type=sales)

Click now  
on the URL



Corporate Headquarters:  
830 E. Arques Ave.  
Sunnyvale, CA 94085 - United States  
Tel: +1 408.400.1200 / Fax: +1 408.744.1250



EMEA Headquarters:  
6-9 The Square, Stockley Park, Uxbridge,  
Middlesex UB11 1FW, United Kingdom  
Tel: +44 203 178 7926 / Fax: +44 870 139 5156